

# PW12-65 12V-65Ah

## PW SERIES VRLA BATTERY



### PW12-65 12V-65Ah



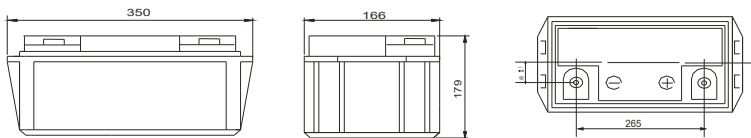
### Physical Specification

Part Number:	<b>PW12-65 (12V 65Ah)</b>
Length:	<b>350 mm (13.78 inches)</b>
Width:	<b>166 mm (6.54 inches)</b>
Height:	<b>179 mm (7.05 inches)</b>
Total Height:	<b>179 mm (7.05 inches)</b>
Approx Weight:	<b>18.20 kg (40.12 lbs) ± 3%</b>

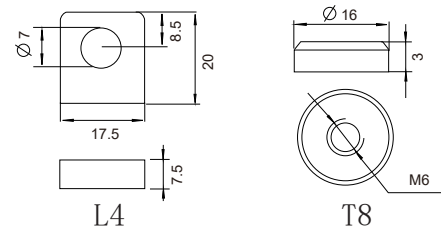
### Specification

Battery Model	Nominal Voltage		<b>12V</b>	
	Rated capacity (20 hour rate)		<b>65 Ah</b>	
	Cells per battery		<b>6</b>	
Dimension	Length	Width	Height	Total Height
	350mm (13.78 inches)	166mm (6.54 inches)	179mm (7.05 inches)	179mm (7.05 inches)
Capacity @25°C (77°F)	10 hour rate(6.5A,10.8V)	5 hour rate(10.4A,10.5V)	3 hour rate(15.50A,10.8V)	1 hour rate(39A,9.6V)
	65Ah	52Ah	46.5Ah	39Ah
Max. discharge current	650A (5 sec.)			
Internal Resistance	Full charged at 25°C : Approx 5.5mΩ			
Capacity affected by Temp. (20 Hour)	40°C (104°F)	25°C (77°F)	0°C (32°F)	-15°C (5°F)
	102%	100%	85%	65%
Self Discharge @25°C (77°F)	After 3 monts storage		After 6 monts storage	After 12 monts storage
	91%		82%	64%
Charge Method @25°C (77°F)	Cycle Use		Float Use	
	14.40-14.70V (Initial charging current less than 19.5A)		13.50-13.80V	

### Dimension



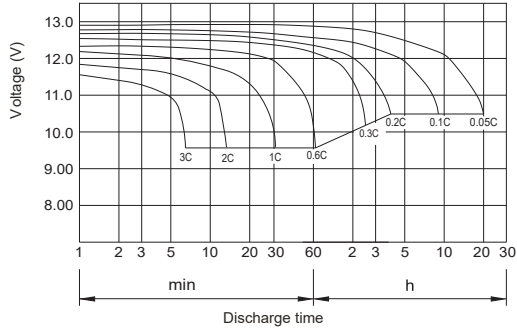
### Terminal Type



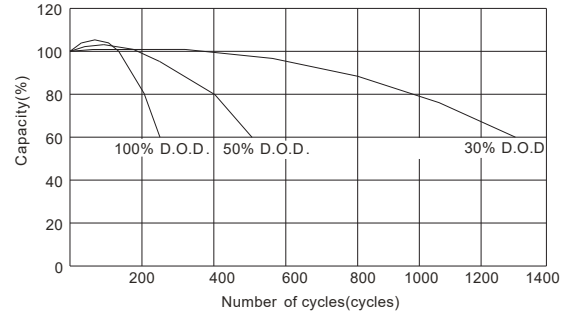
### Constant Current Discharge (Amperes) at 25°C (77°F)

F.V\TIME		5min	10min	15min	30min	1 hr	2 hr	3 hr	4 hr	5 hr	8 hr	10 hr	20 hr
9.60V	A	208.2	137.2	110.6	74.1	39.0	22.8	16.7	13.0	10.7	7.6	6.8	3.7
	W	2148.6	1464.8	1185.5	796.7	421.2	249.8	185.9	146.3	121.9	87.2	78.8	42.9
10.20V	A	201.6	123.8	104.1	70.9	36.7	21.7	16.3	12.7	10.5	7.4	6.7	3.6
	W	2153.4	1381.9	1165.2	795.4	414.6	250.2	188.2	147.4	122.8	86.7	78.7	41.9
10.50V	A	195.1	110.7	91.1	66.3	35.5	21.2	15.9	12.5	10.4	7.3	6.6	3.6
	W	2130.1	1259.3	1039.2	763.0	411.0	245.8	184.8	146.0	121.9	86.4	77.7	42.3
10.80V	A	188.0	104.3	84.6	61.1	34.3	20.7	15.5	12.3	10.1	7.2	6.5	3.5
	W	2109.1	1203.1	974.9	707.9	399.5	242.1	182.4	145.1	119.9	84.7	77.3	41.8
11.10V	A	181.7	97.8	78.1	54.6	33.2	20.2	15.0	12.0	9.9	7.0	6.2	3.3
	W	2060.2	1132.1	909.4	638.8	389.8	238.2	177.6	142.4	117.9	83.3	74.5	40.2

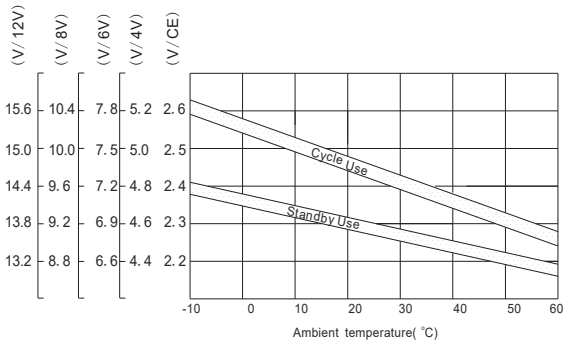
### Discharge characteristic Curve



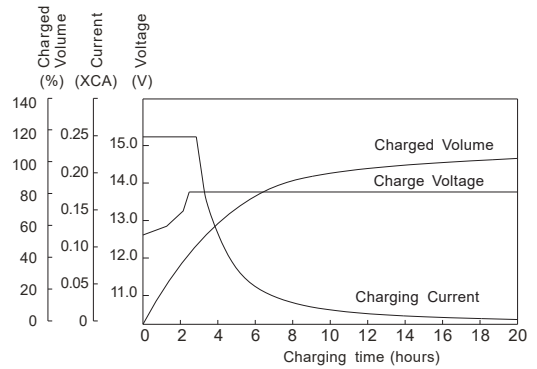
### Cycle service life in relation to depth of discharge



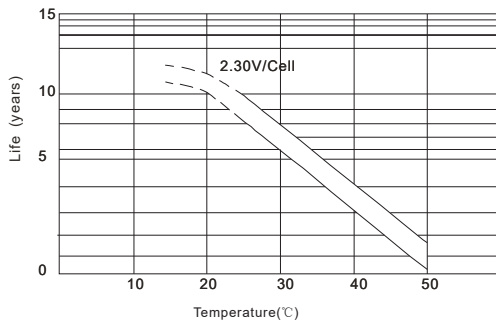
### Relationship between charging voltage and temperature



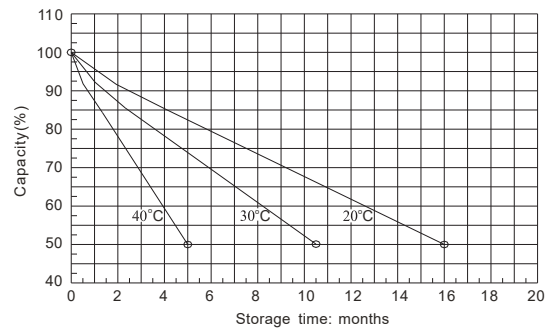
### Constant voltage charging characteristic (0.25CA, at 25 °C)



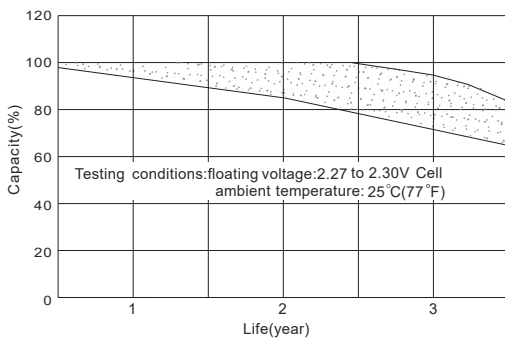
### Temperature effects on float life



### Self-discharge characteristic



### Life characteristics of standby use



### Charge characteristic Curve for standby use

