

# PW12-55 12V-55Ah

## PW SERIES VRLA BATTERY



### PW12-55 12V-55Ah



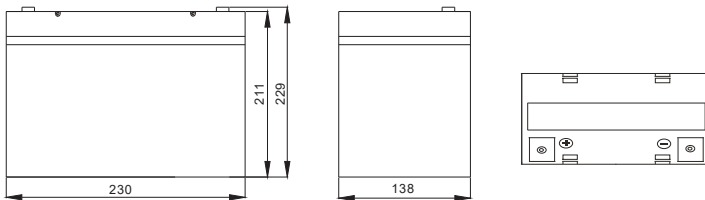
### Physical Specification

Part Number:	<b>PW12-55 (12V 55Ah)</b>
Length:	<b>230 mm (9.06 inches)</b>
Width:	<b>138 mm (5.43 inches)</b>
Height:	<b>211 mm (8.31 inches)</b>
Total Height:	<b>229 mm (9.02 inches)</b>
Approx Weight:	<b>15.1 kg (33.29 lbs) ± 3%</b>

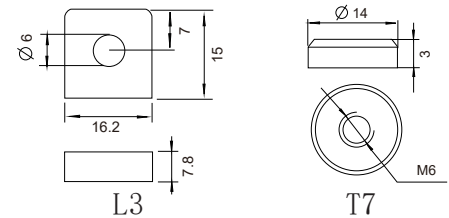
### Specification

Battery Model	Nominal Voltage		<b>12V</b>	
	Rated capacity (20 hour rate)		<b>55 Ah</b>	
	Cells per battery		<b>6</b>	
Dimension	Length	Width	Height	Total Height
	230mm (9.06 inches)	138mm (5.43 inches)	211mm (8.31 inches)	229mm (9.02 inches)
Capacity @25°C (77°F)	10 hour rate(5.5A,10.8V)	5 hour rate(8.8A,10.5V)	3 hour rate(13.1A,10.8V)	1 hour rate(33A,9.6V)
	55Ah	44Ah	39.3Ah	33Ah
Max. discharge current	550A (5 sec.)			
Internal Resistance	Full charged at 25°C : Approx 7.0mΩ			
Capacity affected by Temp. (20 Hour)	40°C (104°F)	25°C (77°F)	0°C (32°F)	-15°C (5°F)
	102%	100%	85%	65%
Self Discharge @25°C (77°F)	After 3 monts storage		After 6 monts storage	After 12 monts storage
	91%		82%	64%
Charge Method @25°C (77°F)	Cycle Use		Float Use	
	14.40-14.70V (Initial charging current less than 16.5A)		13.50-13.80V	

### Dimension



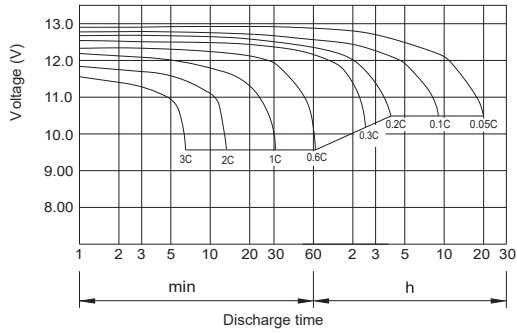
### Terminal Type



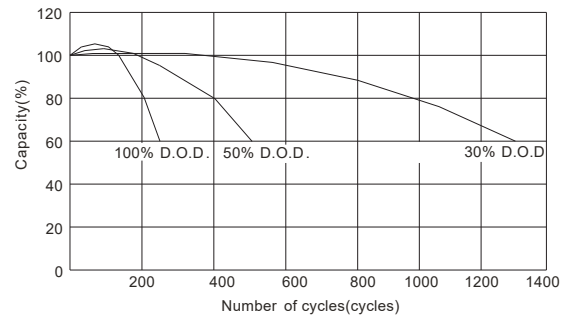
### Constant Current Discharge (Amperes) at 25°C (77°F)

F.V\TIME		5min	10min	15min	30min	1 hr	2 hr	3 hr	4 hr	5 hr	8 hr	10 hr	20 hr
9.60V	A	176.2	116.1	93.6	62.7	19.3	14.0	14.1	11.0	9.1	6.4	5.8	3.1
	W	1818.0	1239.4	1003.1	674.2	211.4	153.7	157.3	123.8	103.2	73.7	66.7	36.3
10.20V	A	170.6	104.7	88.1	60.0	18.4	13.4	13.8	10.7	8.9	6.3	5.7	3.0
	W	1822.1	1169.3	986.0	673.0	211.7	154.0	159.2	124.7	103.9	73.4	66.6	35.5
10.50V	A	165.1	93.7	77.1	56.1	17.9	13.0	13.4	10.6	8.8	6.2	5.6	3.0
	W	1802.4	1065.5	879.4	645.6	208.0	151.2	156.4	123.6	103.2	73.1	65.7	35.8
10.80V	A	159.1	88.3	71.6	51.7	17.5	12.7	13.1	10.4	8.6	6.1	5.5	3.0
	W	1784.7	1018.0	824.9	599.0	204.8	149.0	154.3	122.7	101.4	71.7	65.4	35.4
11.10V	A	153.7	82.7	66.1	46.2	17.1	12.4	12.7	10.1	8.4	5.9	5.2	2.8
	W	1743.2	957.9	769.5	540.5	201.5	146.6	150.3	120.5	99.8	70.5	63.1	34.0

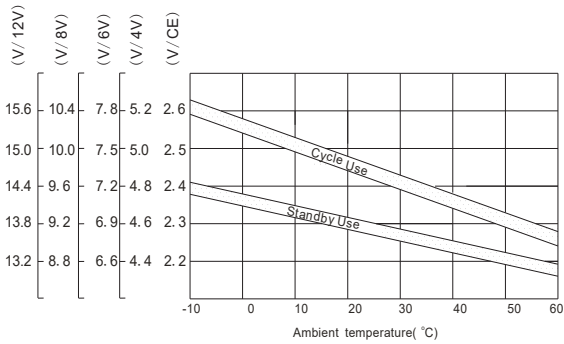
### Discharge characteristic Curve



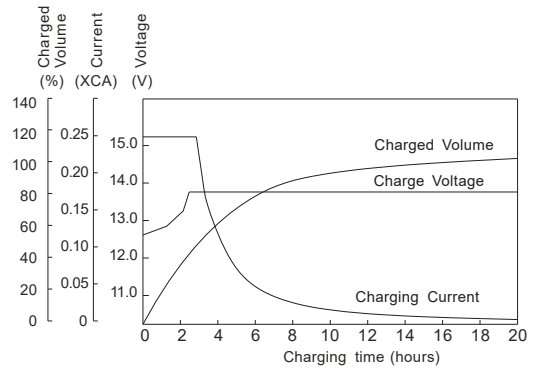
### Cycle service life in relation to depth of discharge



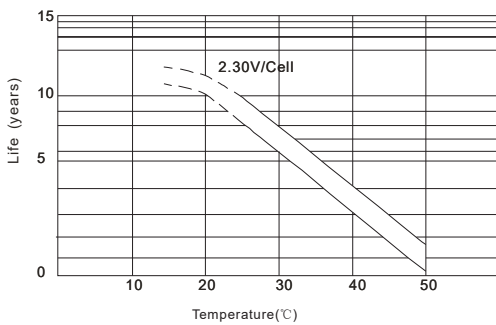
### Relationship between charging voltage and temperature



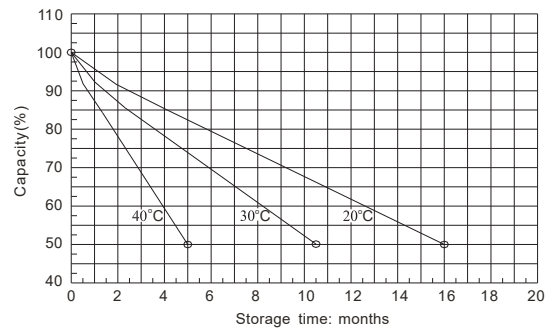
### Constant voltage charging characteristic (0.25CA, at 25 °C)



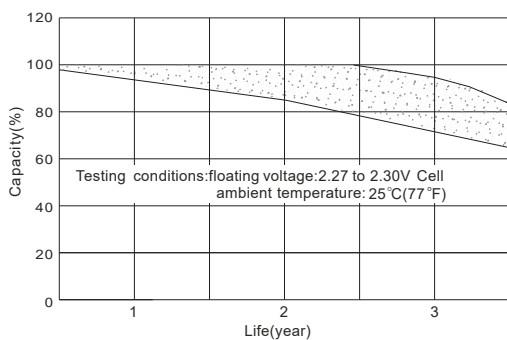
### Temperature effects on float life



### Self-discharge characteristic



### Life characteristics of standby use



### Charge characteristic Curve for standby use

