

# PW12-200 12V-200Ah

PW SERIES VRLA BATTERY



## PW12-200 12V-200Ah



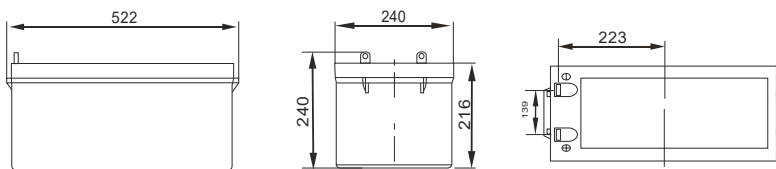
## Physical Specification

Part Number:	<b>PW12-200 (12V 200Ah)</b>
Length:	<b>522 mm (20.55 inches)</b>
Width:	<b>240 mm (9.45 inches)</b>
Height:	<b>216 mm (8.50 inches)</b>
Total Height:	<b>240 mm (9.45 inches)</b>
Approx Weight:	<b>55.5 kg (122.22 lbs) ± 3%</b>

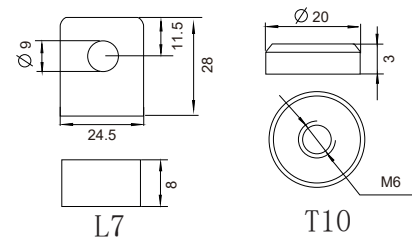
## Specification

Battery Model	Nominal Voltage		<b>12V</b>	
	Rated capacity (20 hour rate)		<b>200 Ah</b>	
	Cells per battery		<b>6</b>	
Dimension	Length	Width	Height	Total Height
	522mm (20.55 inches)	240mm (9.45 inches)	216mm (8.50 inches)	240mm (9.45 inches)
Capacity @25°C (77°F)	10 hour rate (20A, 10.8V)	5 hour rate (32A, 10.5V)	3 hour rate (47.6A, 10.8V)	1 hour rate (120A, 9.6V)
	200Ah	160Ah	142.8Ah	120Ah
Max. discharge current	1400A (5 sec.)			
Internal Resistance	Full charged at 25°C : Approx 3.2mΩ			
Capacity affected by Temp. (20 Hour)	40°C (104°F)	25°C (77°F)	0°C (32°F)	-15°C (5°F)
	102%	100%	85%	65%
Self Discharge @25°C (77°F)	After 3 months storage		After 6 months storage	After 12 months storage
	91%		82%	64%
Charge Method @25°C (77°F)	Cycle Use		Float Use	
	14.40-14.70V (Initial charging current less than 60A)		13.50-13.80V	

## Dimension



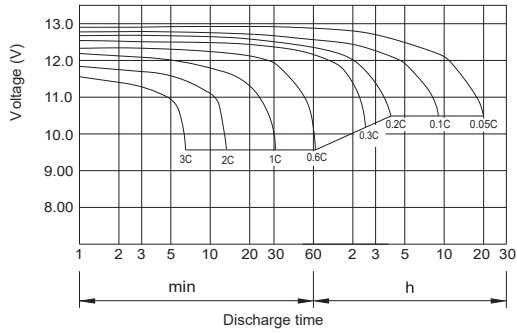
## Terminal Type



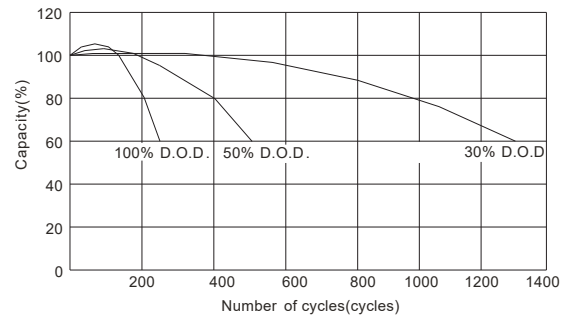
## Constant Current Discharge (Amperes) at 25°C (77°F)

F.V\TIME		5min	10min	15min	30min	1 hr	2 hr	3 hr	4 hr	5 hr	8 hr	10 hr	20 hr
9.60V	A	640.6	422.0	340.2	228.0	120.0	70.0	51.4	40.0	33.0	23.4	21.0	11.3
	W	6611.0	4507.0	3647.6	2451.5	1296.0	768.6	572.1	450.0	375.2	268.2	242.6	131.9
10.20V	A	620.4	380.8	320.4	218.0	112.8	66.8	50.0	39.0	32.4	22.8	20.6	11.0
	W	6625.9	4252.0	3585.3	2447.3	1275.8	769.9	579.0	453.5	377.7	266.8	242.0	129.0
10.50V	A	600.2	340.6	280.2	204.0	109.2	65.2	48.8	38.4	32.0	22.6	20.2	11.0
	W	6554.2	3874.7	3197.6	2347.6	1264.5	756.2	568.6	449.3	375.2	265.8	239.0	130.0
10.80V	A	578.4	321.0	260.4	188.0	105.6	63.6	47.6	37.8	31.2	22.0	20.0	10.8
	W	6489.6	3701.8	2999.8	2178.2	1229.2	744.9	561.2	446.3	368.8	260.7	237.7	128.6
11.10V	A	559.0	300.8	240.4	168.0	102.0	62.0	46.0	36.8	30.4	21.4	19.0	10.2
	W	6339.1	3483.3	2798.3	1965.6	1199.5	732.8	546.5	438.3	362.8	256.3	229.4	123.6

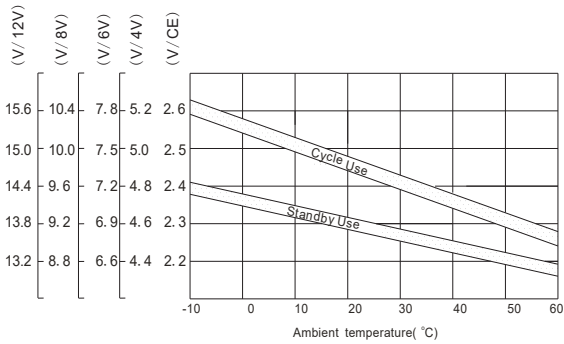
### Discharge characteristic Curve



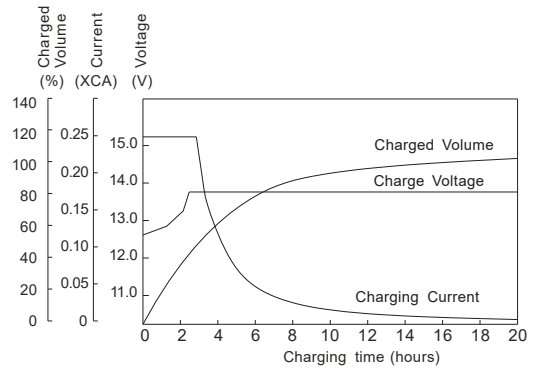
### Cycle service life in relation to depth of discharge



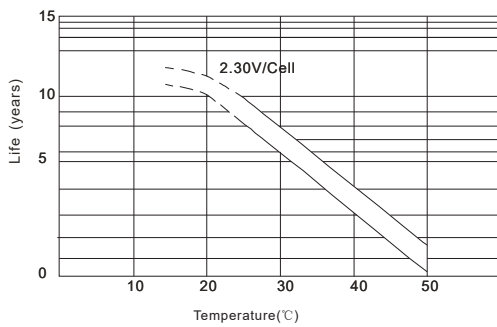
### Relationship between charging voltage and temperature



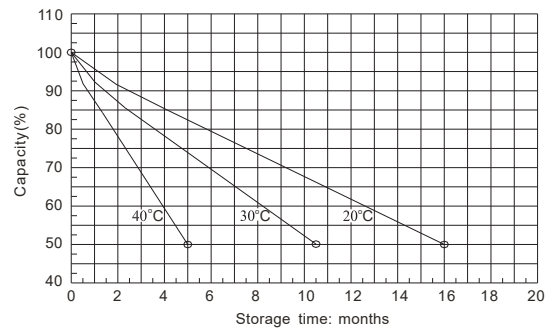
### Constant voltage charging characteristic (0.25CA, at 25 °C)



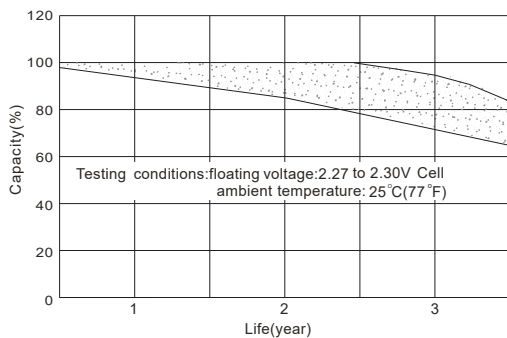
### Temperature effects on float life



### Self-discharge characteristic



### Life characteristics of standby use



### Charge characteristic Curve for standby use

