

# PW12-18 12V-18Ah

## PW SERIES VRLA BATTERY



### PW12-18 12V-18Ah



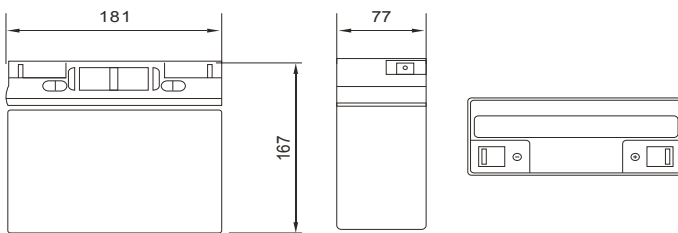
### Physical Specification

Part Number:	<b>PW12-18 (12V 18Ah)</b>
Length:	<b>181 mm (7.13 inches)</b>
Width:	<b>77 mm (3.03 inches)</b>
Height:	<b>167 mm (6.57 inches)</b>
Total Height:	<b>167 mm (6.57 inches)</b>
Approx Weight:	<b>5.1 kg (11.24 lbs) ± 3%</b>

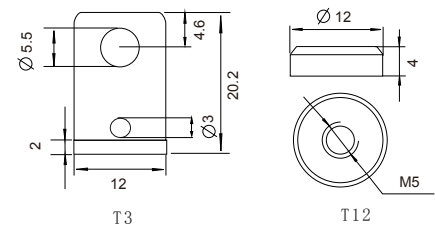
### Specification

Battery Model	Nominal Voltage		<b>12V</b>	
	Rated capacity (20 hour rate)		<b>18Ah</b>	
	Cells per battery		<b>6</b>	
Dimension	Length	Width	Height	Total Height
	181mm (7.13 inches)	77mm (3.03 inches)	167mm (6.57 inches)	167mm (6.57 inches)
Capacity @25°C (77°F)	20 hour rate (0.9A,10.5V)	10 hour rate (1.61A,10.8V)	5 hour rate (3.06A,10.5V)	1 hour rate (10.8A,9.6V)
	18Ah	16.1Ah	15.3Ah	10.8Ah
Max. discharge current	270A (5 sec.)			
Internal Resistance	Full charged at 25 C : Approx 13mΩ			
Capacity affected by Temp. (20 Hour)	40°C (104°F)	25°C (77°F)	0°C (32°F)	-15°C (5°F)
	102%	100%	85%	65%
Self Discharge @25°C (77°F)	After 3 mnts storage		After 6 mnts storage	After 12 mnts storage
	91%		82%	64%
Charge Method @25°C (77°F)	Cycle Use		Float Use	
	14.40-14.70V (Initial charging current less than 5.4A)		13.50-13.80V	

### Dimension



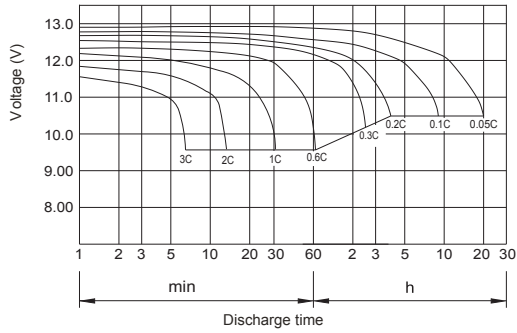
### Terminal Type



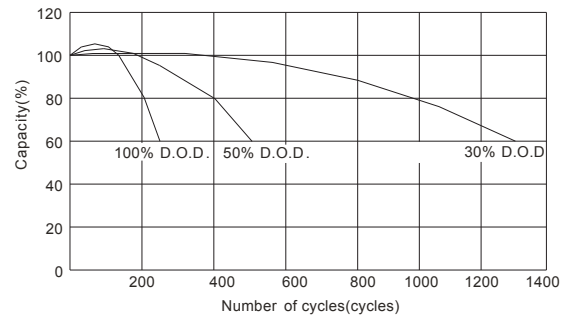
### Constant Current Discharge (Amperes) at 25°C (77°F)

F.V\TIME		5min	10min	15min	30min	1 hr	2 hr	3 hr	4 hr	5 hr	8 hr	10 hr	20 hr
9.60V	A	64.80	42.50	31.50	20.70	10.80	6.30	4.64	3.72	3.16	2.08	1.70	0.93
	W	764.20	480.00	363.00	219.70	124.50	72.90	53.63	43.05	36.53	24.08	19.72	10.80
10.20V	A	59.40	40.60	28.90	19.70	10.14	6.04	4.50	3.60	3.10	2.05	1.67	0.91
	W	719.20	454.50	341.20	218.30	117.00	70.00	52.12	41.70	35.85	23.70	19.35	10.50
10.50V	A	54.10	38.00	27.00	19.00	9.81	5.93	4.42	3.42	3.06	2.03	1.66	0.90
	W	694.50	441.00	326.30	216.00	113.50	68.60	51.22	39.60	35.63	23.48	19.20	10.43
10.80V	A	52.00	36.30	25.20	18.50	9.48	5.77	4.35	3.36	2.93	1.97	1.61	0.88
	W	609.00	427.50	314.20	215.20	110.30	67.20	50.63	39.11	34.05	22.50	18.75	10.20
11.10V	A	48.00	34.20	23.40	18.00	9.15	5.63	4.13	3.30	2.80	1.92	1.58	0.86
	W	588.70	413.20	299.30	213.80	108.80	66.70	49.13	39.00	33.30	21.75	18.37	10.13

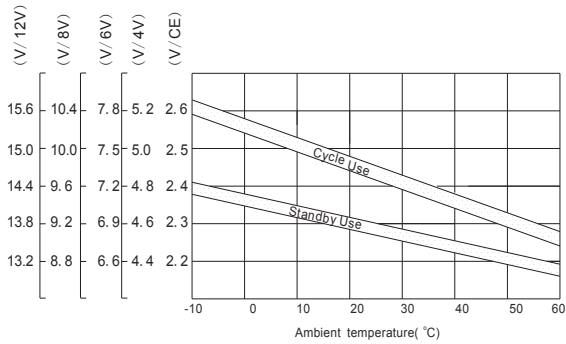
### Discharge characteristic Curve



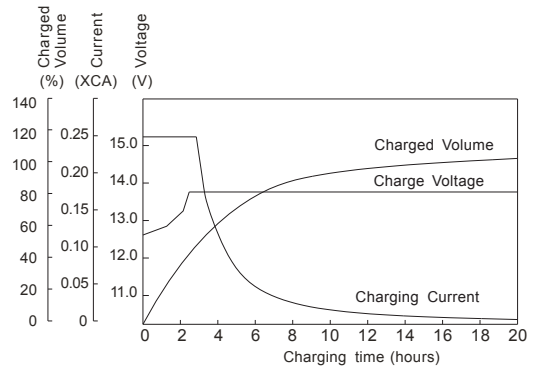
### Cycle service life in relation to depth of discharge



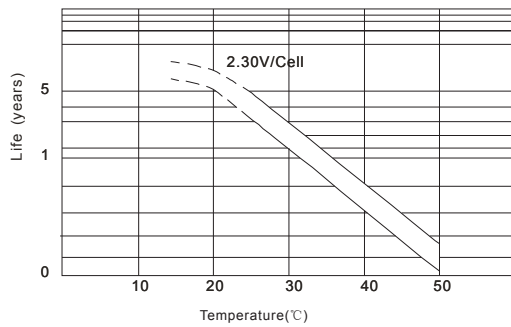
### Relationship between charging voltage and temperature



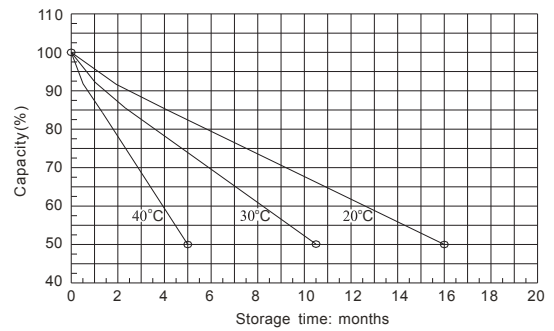
### Constant voltage charging characteristic (0.25CA, at 25 °C)



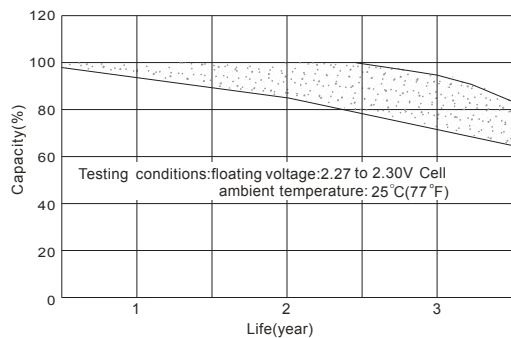
### Temperature effects on float life



### Self-discharge characteristic



### Life characteristics of standby use



### Charge characteristic Curve for standby use

