

PW12-120 12V-120Ah

PW SERIES VRLA BATTERY



PW12-120 12V-120Ah



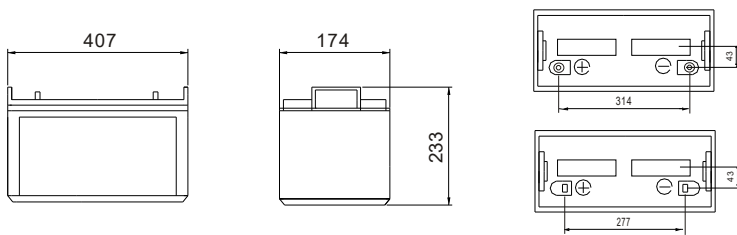
Physical Specification

Part Number:	PW12-120 (12V 120Ah)
Length:	407 mm (16.0 inches)
Width:	174 mm (6.85 inches)
Height:	209 mm (8.23 inches)
Total Height:	233 mm (9.17 inches)
Approx Weight:	32.3 kg (71.21 lbs) ± 3%

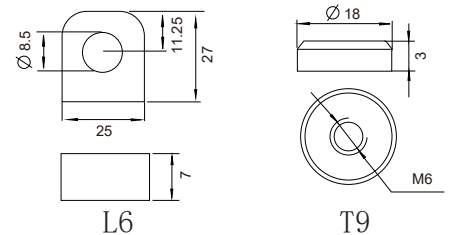
Specification

Battery Model	Nominal Voltage		12V	
	Rated capacity (20 hour rate)		120 Ah	
	Cells per battery		6	
Dimension	Length	Width	Height	Total Height
	407mm (16.0 inches)	174mm (6.85 inches)	233mm (8.23 inches)	233mm (9.17 inches)
Capacity @25°C (77°F)	10 hour rate (12A, 10.8V)	5 hour rate (19.2A, 10.5V)	3 hour rate (29.0A, 10.5V)	1 hour rate (72A, 9.6V)
	120Ah	96Ah	87Ah	72Ah
Max. discharge current	960A (5 sec.)			
Internal Resistance	Full charged at 25°C : Approx 4.5mΩ			
Capacity affected by Temp. (20 Hour)	40°C (104°F)	25°C (77°F)	0°C (32°F)	-15°C (5°F)
	102%	100%	85%	65%
Self Discharge @25°C (77°F)	After 3 months storage		After 6 months storage	After 12 months storage
	91%		82%	64%
Charge Method @25°C (77°F)	Cycle Use		Float Use	
	14.40-14.70V (Initial charging current less than 36A)		13.50-13.80V	

Dimension



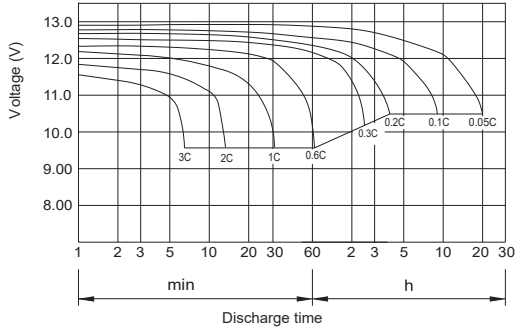
Terminal Type



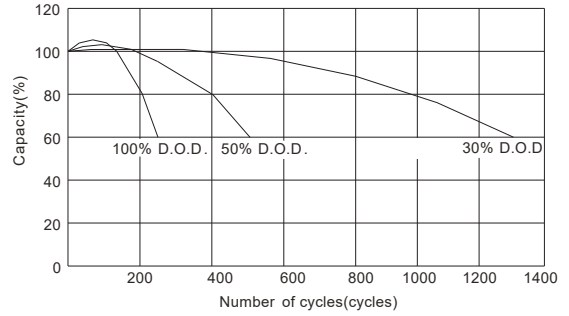
Constant Current Discharge (Amperes) at 25°C (77°F)

F.V\TIME		5min	10min	15min	30min	1 hr	2 hr	3 hr	4 hr	5 hr	8 hr	10 hr	20 hr
9.60V	A	384	253	204	137	72	42	31	24.0	19.8	14.0	12.6	6.8
	W	3967	2704	2189	1471	778	461	343	270.0	225.1	160.9	145.5	79.1
10.20V	A	372	228	192	131	68	40	30	23.4	19.4	13.7	12.4	6.6
	W	3976	2551	2151	1468	765	462	347	272.1	226.6	160.1	145.2	77.4
10.50V	A	360	204	168	122	66	39	29	23.0	19.2	13.6	12.1	6.6
	W	3933	2325	1919	1409	759	454	341	269.6	225.1	159.5	143.4	78.0
10.80V	A	347	193	156	113	63	38	29	22.7	18.7	13.2	12.0	6.5
	W	3894	2221	1800	1307	738	447	337	267.8	221.3	156.4	142.6	77.2
11.10V	A	335	180	144	101	61	37	28	22.1	18.2	12.8	11.4	6.1
	W	3803	2090	1679	1179	720	440	328	263.0	217.7	153.8	137.6	74.2

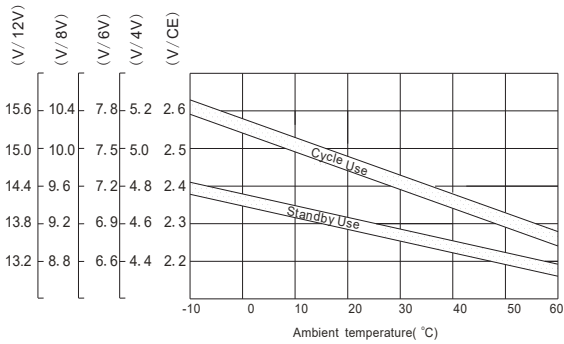
Discharge characteristic Curve



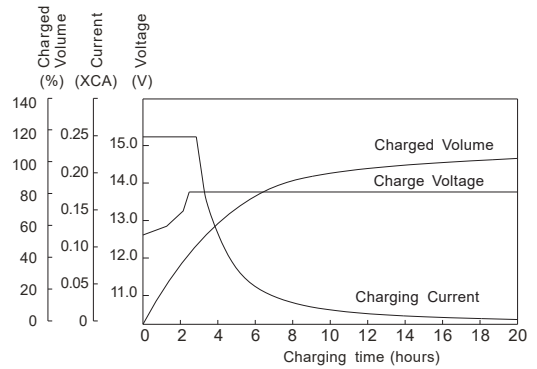
Cycle service life in relation to depth of discharge



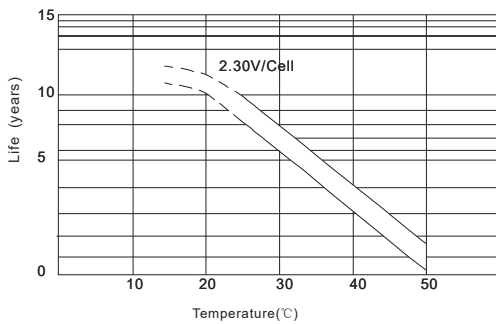
Relationship between charging voltage and temperature



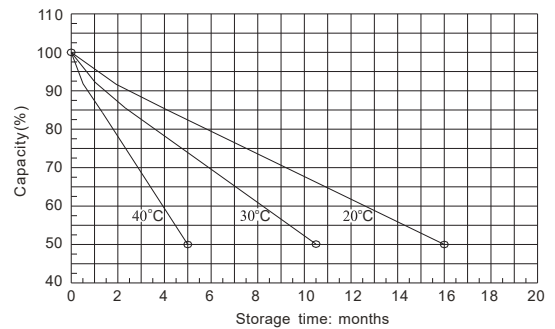
Constant voltage charging characteristic (0.25CA, at 25 °C)



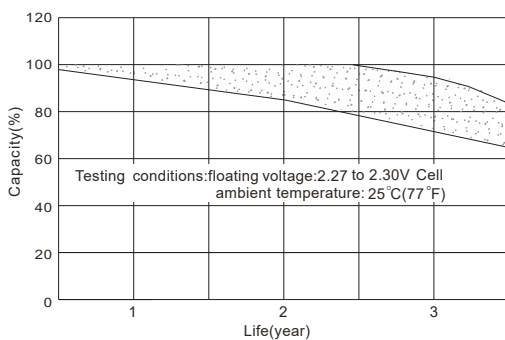
Temperature effects on float life



Self-discharge characteristic



Life characteristics of standby use



Charge characteristic Curve for standby use

