

PW12-100 12V-100Ah

PW SERIES VRLA BATTERY



PW12-100 12V-100Ah



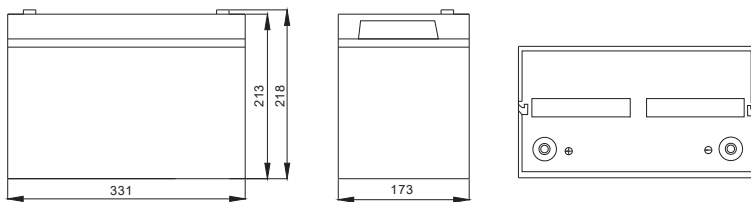
Physical Specification

Part Number:	PW12-100 (12V 100Ah)
Length:	331 mm (13.03 inches)
Width:	173 mm (6.81 inches)
Height:	213 mm (8.39 inches)
Total Height:	218 mm (9.17 inches)
Approx Weight:	28.1 kg (61.95 lbs) ± 3%

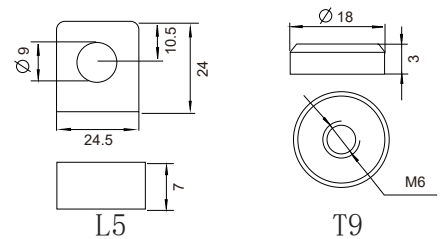
Specification

Battery Model	Nominal Voltage		12V	
	Rated capacity (20 hour rate)		100 Ah	
	Cells per battery		6	
Dimension	Length	Width	Height	Total Height
	331mm (13.03 inches)	173mm (6.81 inches)	213mm (8.39 inches)	218mm (9.17 inches)
Capacity @25°C (77°F)	10 hour rate (10A,10.8V)	5 hour rate (16A,10.5V)	3 hour rate (23.8A,10.5V)	1 hour rate (60A,9.6V)
	100Ah	80Ah	71.4Ah	60Ah
Max. discharge current	800A (5 sec.)			
Internal Resistance	Full charged at 25°C : Approx 4.8mΩ			
Capacity affected by Temp. (20 Hour)	40°C (104°F)	25°C (77°F)	0°C (32°F)	-15°C (5°F)
	102%	100%	85%	65%
Self Discharge @25°C (77°F)	After 3 monts storage		After 6 monts storage	
	91%		82%	
Charge Method @25°C (77°F)	Cycle Use		Float Use	
	14.40-14.70V (Initial charging current less than 30A)		13.50-13.80V	

Dimension



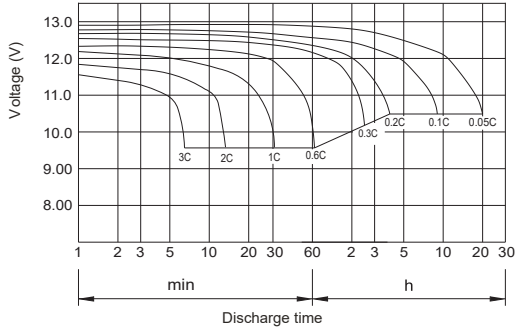
Terminal Type



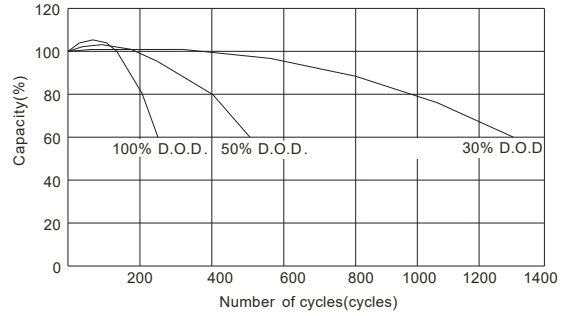
Constant Current Discharge (Amperes) at 25°C (77°F)

F.V\TIME		5min	10min	15min	30min	1 hr	2 hr	3 hr	4 hr	5 hr	8 hr	10 hr	20 hr
9.60V	A	320.3	211.0	170.1	114.0	60.0	35.0	25.7	20.0	16.5	11.7	10.5	5.7
	W	3305.5	2253.5	1823.8	1225.7	648.0	384.3	286.0	225.0	187.6	134.1	121.3	65.9
10.20V	A	310.2	190.4	160.2	109.0	56.4	33.4	25.0	19.5	16.2	11.4	10.3	5.5
	W	3312.9	2126.0	1792.6	1223.6	637.9	385.0	289.5	226.7	188.9	133.4	121.0	64.5
10.50V	A	300.1	170.3	140.1	102.0	54.6	32.6	24.4	19.2	16.0	11.3	10.1	5.5
	W	3277.1	1937.3	1598.8	1173.8	632.3	378.1	284.3	224.6	187.6	132.9	119.5	65.0
10.80V	A	289.2	160.5	130.2	94.0	52.8	31.8	23.8	18.9	15.6	11.0	10.0	5.4
	W	3244.8	1850.9	1499.9	1089.1	614.6	372.4	280.6	223.2	184.4	130.4	118.9	64.3
11.10V	A	279.5	150.4	120.2	84.0	51.0	31.0	23.0	18.4	15.2	10.7	9.5	5.1
	W	3169.5	1741.6	1399.1	982.8	599.8	366.4	273.2	219.1	181.4	128.1	114.7	61.8

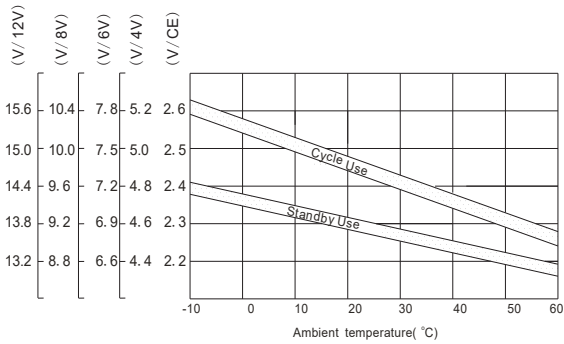
Discharge characteristic Curve



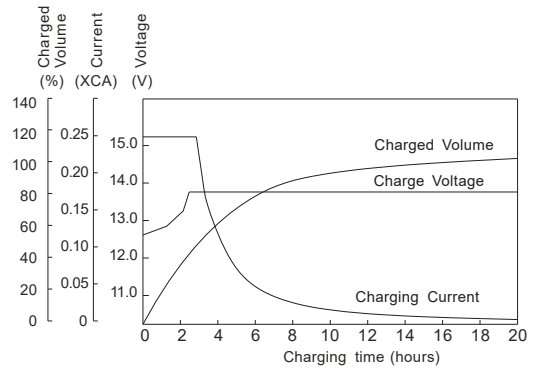
Cycle service life in relation to depth of discharge



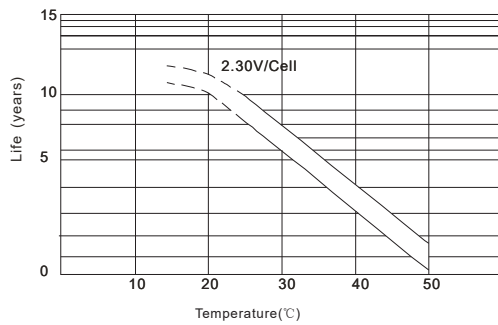
Relationship between charging voltage and temperature



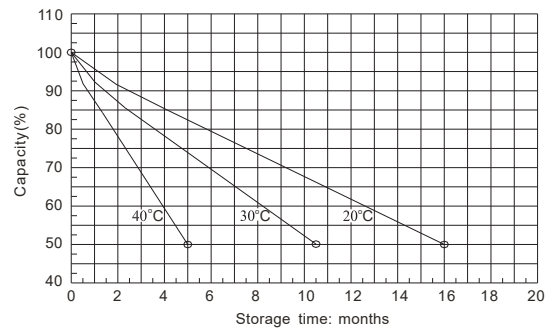
Constant voltage charging characteristic (0.25CA, at 25 °C)



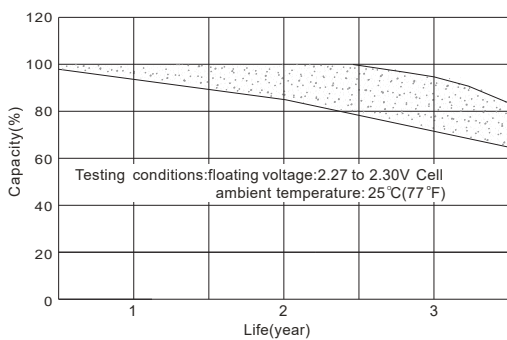
Temperature effects on float life



Self-discharge characteristic



Life characteristics of standby use



Charge characteristic Curve for standby use

