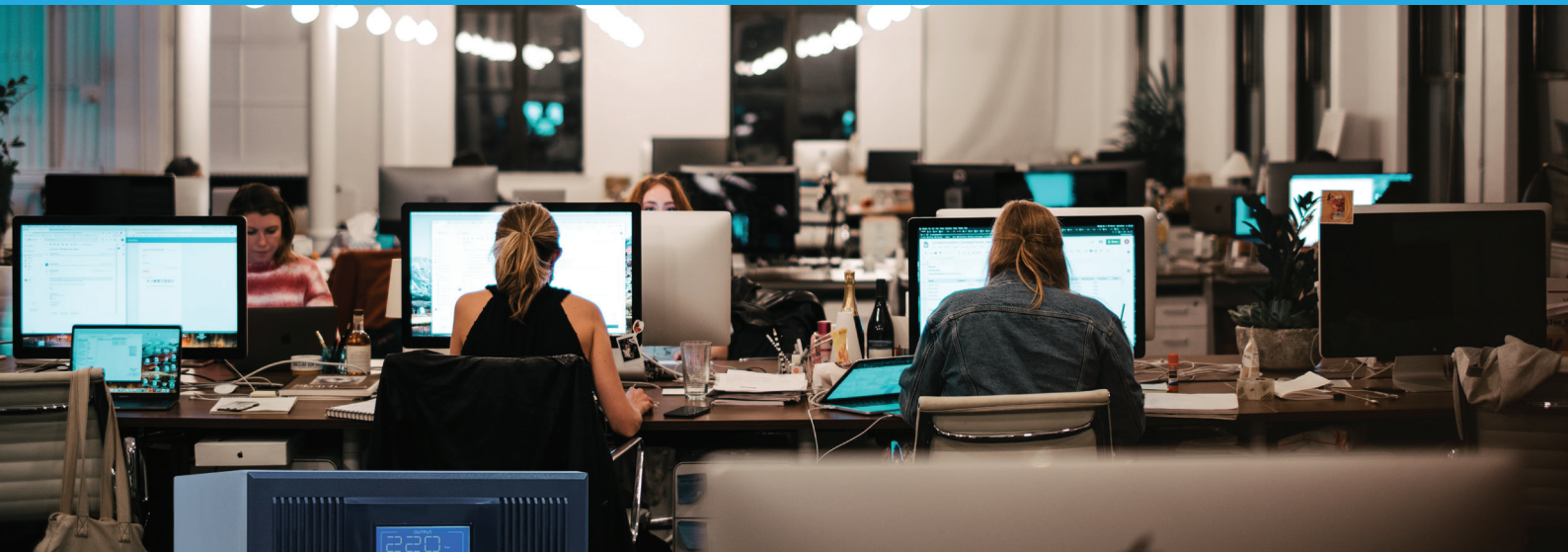


Online Transformer-free UPS

Power Castle Plus Series 1-10 kVA



Data Center



Point of Sale



Networking



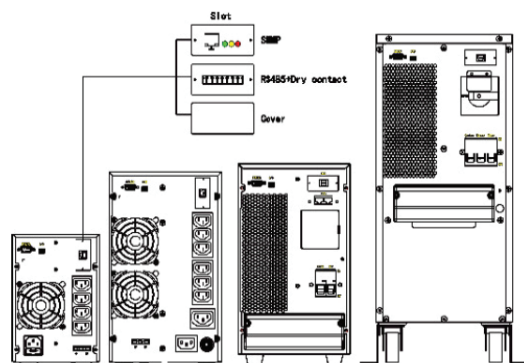
Commercial

Green Power

- Input power factor up to 0.9996, low THDi (< 5%), decrease pollution city power.
- AC/ DC efficiency up to 95%, energy saving and low carbon emission.
- Compliance with RoHS standart, innocuous and environmental friendly.
- Design in accordance to International EMC and safety standart.

Excellent Flexibility

- Output voltage and ECO mode are selectable via LCD.
- 1-8A charging current settable via software (6-10 kVA)
- Batteries quantity are settable (16/17/18/19/ 20 for 6-10kVA)
- Maintenance bypass for 6-10kVA (option)
- Battery disconnection alarm (option)
- SNMP or RS485+dry contact (option)
- Charging voltage temperature compensation (option)



Available Socket



www.powerwave-energy.com

Power Castle Plus Series 1-10 kVA

Specifications



MODEL	PC1000+/ PC1000L+	PC2000+/ PC2000L+	PC3000+/ PC3000L+	PC6000+/ PC6000L+	PC1110S+/ PC1110+
Input					
Voltage (Vac)	120~295			80~275	
Frequency (Hz)	50/60± 10% (50/60Hz auto-sensing)				
Power Factor	≥0.99				
THDi	<5%				
Output					
Capacity (VA)	1000	2000	3000	6000	10000
Max. AC/AC Efficiency	92%	93%	94%	95%	95%
Power Factor	0.9 (1.0 optional)				
Voltage (Vac)	208/220/230/240±1% (selectable on display panel)				
Frequency (Hz)	50/60±0.2% (battery mode)				
THDv	THD < 2% (linear load); THD < 5% (nonlinear load)			THD < 1% (linear load); THD < 4% (nonlinear load)	
Transfer Time (ms)	0				
Battery					
Voltage (Vdc)	24 or 36/36	48 or 72/72	72 or 96/96	192/192~240	192/192~240
BATT Type	2×9Ah 12V or 3×7Ah 12V/ External	4×9Ah 12V or 6×7Ah 12V/ External	6×9Ah 12V or 8×7Ah 12V/ External	16×7Ah 12V/ External (16~20 units settable)	16×9Ah 12V/ External (16~20 units settable)
Charger Current (A) Max.	1/4	1/4	1/4	1~8 (adjustable)	1~8 (adjustable)
Other					
Communication Interface	RS232, EPO, USB (slot) (SNMP, RS485+dry contact are optional in slot)				
LCD Display	AC input & output voltage, frequency, Load level, battery level, temperature; AC mode, battery mode, bypass mode, and fault				
Alarm	Low battery, abnormal AC input, UPS failure, etc.				
Protection	Low battery, overload, short-circuit and over temperature, etc.				
Noise (dB)	<50	<55			
Working Temperature ()	-5~40				
Relative Humidity	0 ~ 95%, no condensation				
Dimension (W×D×H) mm	145×360×225	190×400×330		230×502×553/190×422×337	
Weight (kg)	9.2 or 11.6/4.5	17.7 or 22.4/8.5	22.9 or 27.6/9.2	54.5/10.9	56.2/12.5

